

Barcode Settings

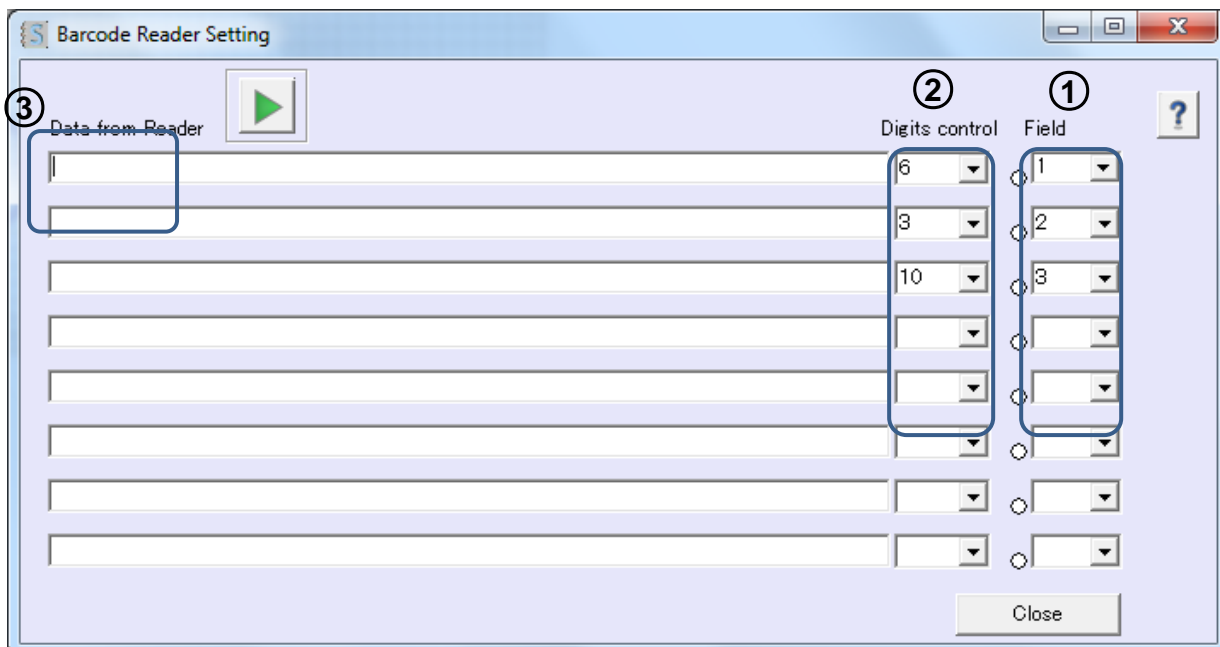
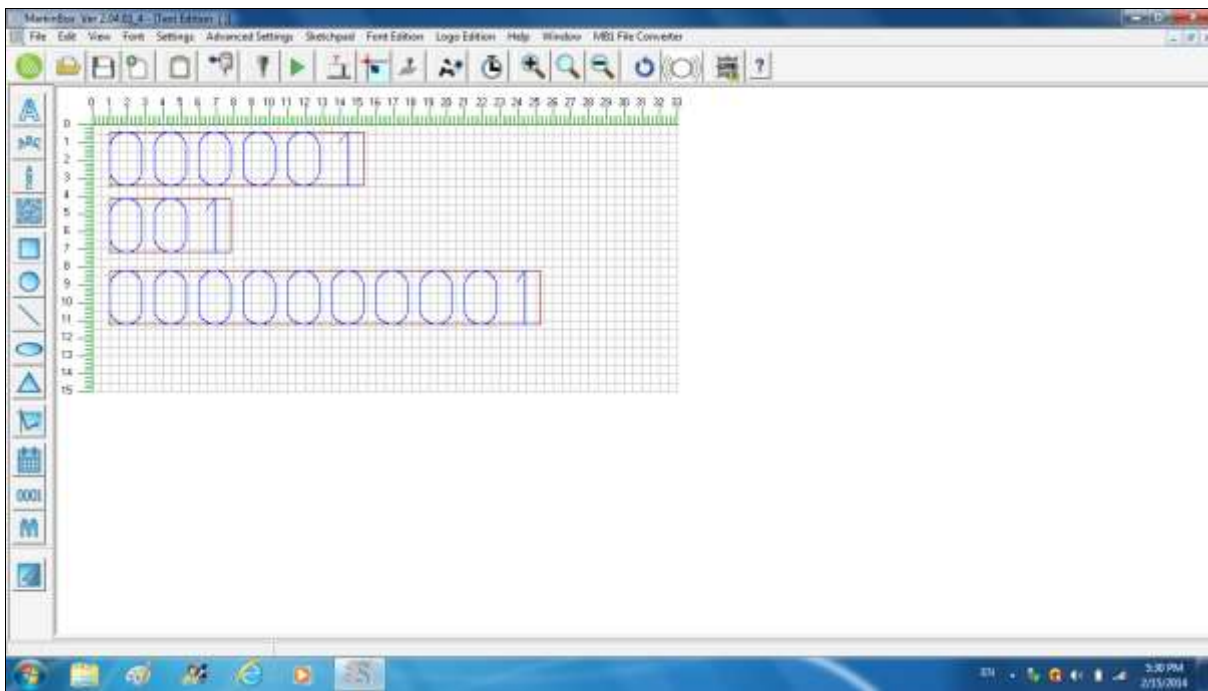
Menu → Advanced Settings → Barcode

Data can be scanned in from a barcode reader connected to the PC, then sent to the controller and used for marking. Marking is done after linking the scanned data to a field created beforehand. Up to 8 fields can be incorporated into one file.

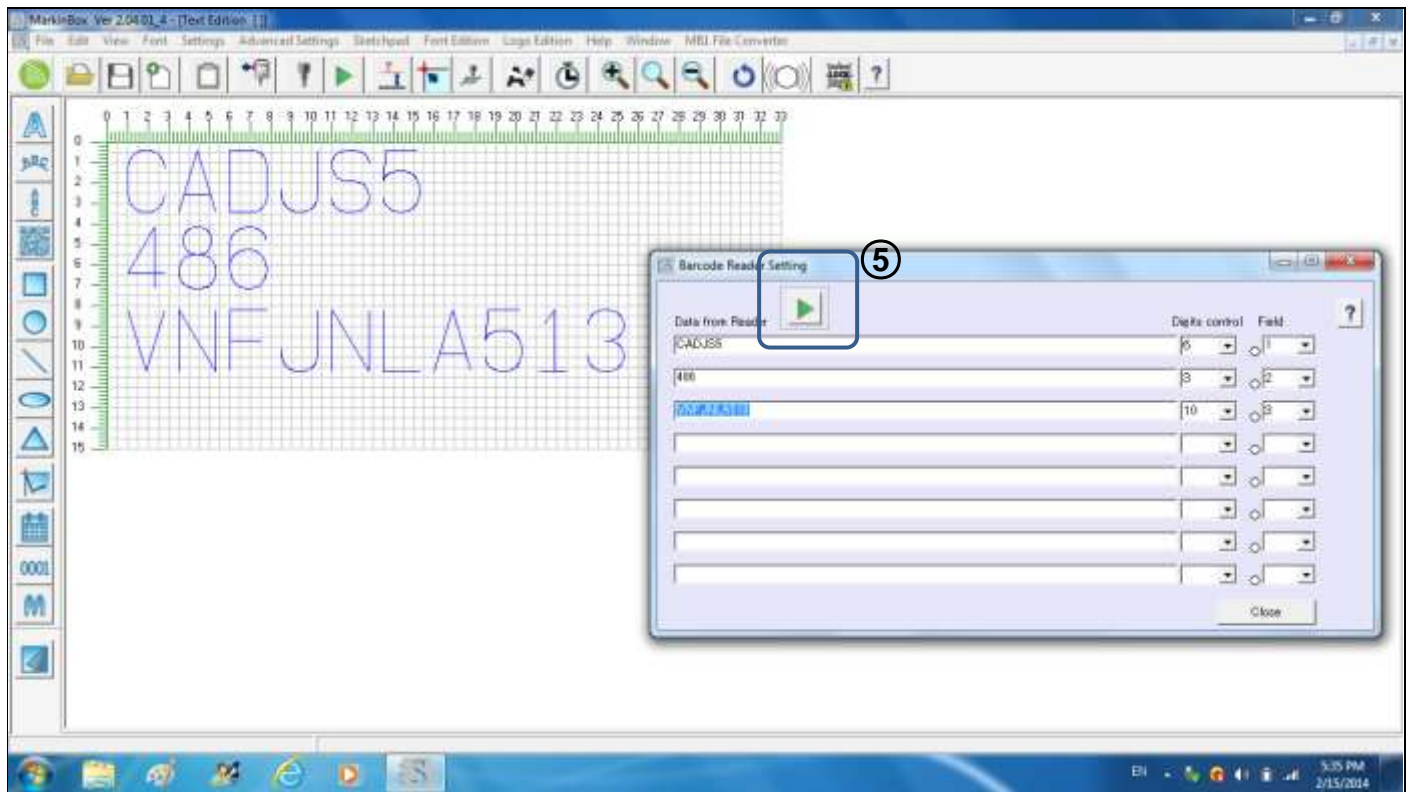
--- Instructions ---


Create the marking field in the main screen in advance. (Create the field with the same content and number of characters that will actually be imported.)

If you want to mark by MB mode, click  icon.



1. Select the field to which the scanned data will be sent (link field) from the pull-down menu. (The numbers of the fields created in the main screen will be displayed.)
2. Select the digits for protection unexpected marking (setup "None" if don't need protection)
3. Place the cursor in the "Data from reader" text box.
4. Scan the data for marking with the barcode reader that is connected to the PC. If multiple settings for scanned text are to be made, move the cursor up and down using the **ENTER** key on the keyboard



5. After the text appears in the "Data from reader" text box, start marking  using the selected marking mode.